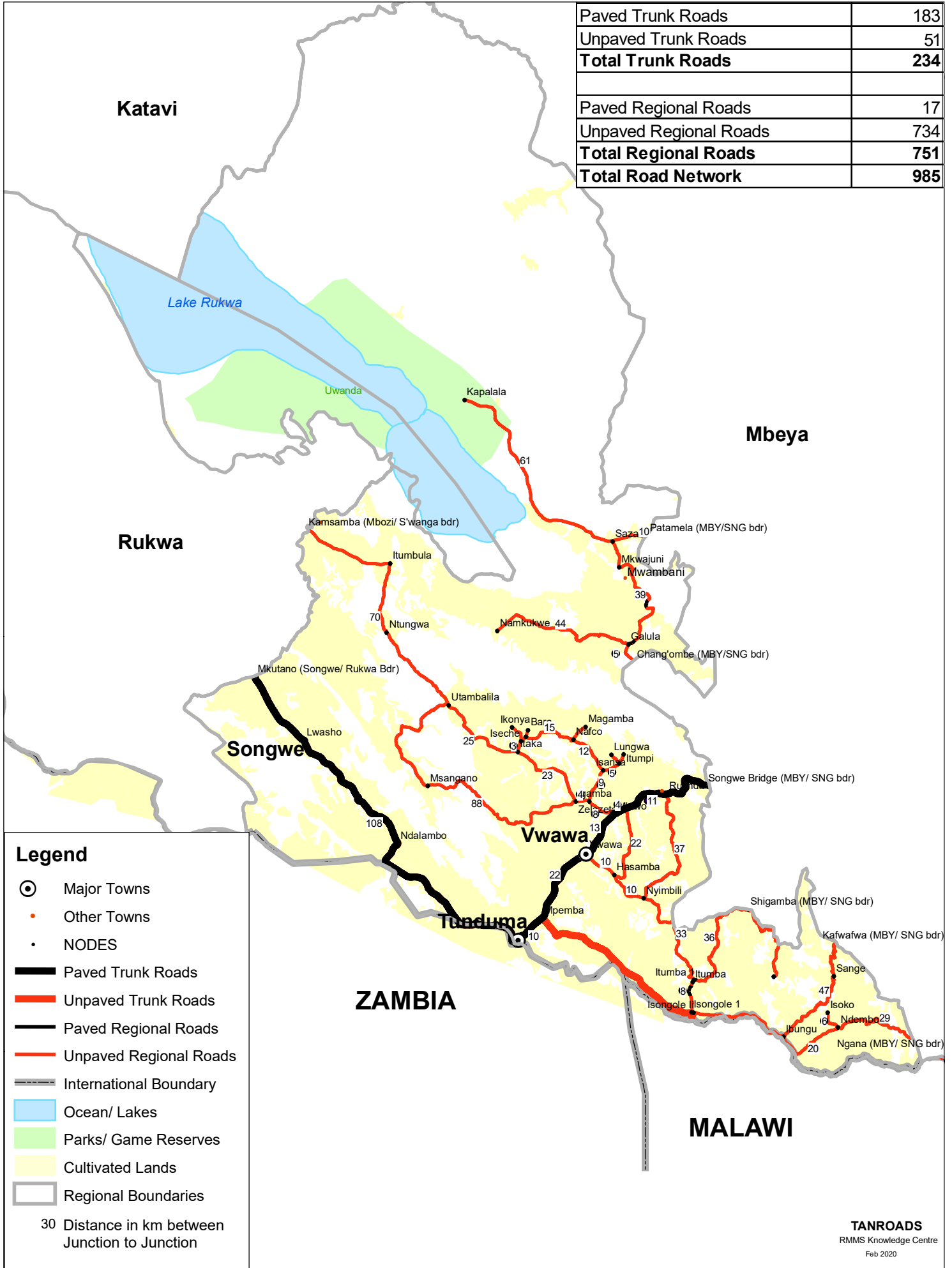


# SONGWE REGION ROADS NETWORK

|                             |            |
|-----------------------------|------------|
| Paved Trunk Roads           | 183        |
| Unpaved Trunk Roads         | 51         |
| <b>Total Trunk Roads</b>    | <b>234</b> |
| Paved Regional Roads        | 17         |
| Unpaved Regional Roads      | 734        |
| <b>Total Regional Roads</b> | <b>751</b> |
| <b>Total Road Network</b>   | <b>985</b> |



**Legend**

- ⊙ Major Towns
- Other Towns
- NODES
- Paved Trunk Roads
- Unpaved Trunk Roads
- Paved Regional Roads
- Unpaved Regional Roads
- International Boundary
- Ocean/ Lakes
- Parks/ Game Reserves
- Cultivated Lands
- Regional Boundaries

30 Distance in km between Junction to Junction